

Tree List

Tree Number	Common Name	Latin Name
1	Snow Fountains Weeping Higan Cherry	Prunus yedoensis
2	Chinese Snowball Viburnum	Viburnum macrocephalum
3	Serviceberry	Amelanchier arborea
4	Carolina Silverbell	Halesia carolina
5	Sugar Maple	Acer saccharum
6	Red Buckeye	Aesculus pavia
7	Grancy Graybeard	Chionanthus virginicus
8	Willow Oak	Quercus phellos
9	Higan Cherry	Prunus subhirtella
10	American Holly	Ilex opaca
11	Snow Goose Cherry	Prunus serrulata
12	Kwanzan Cherry	Prunus serrulata 'Kanzan'
13	Bottlebrush Buckeye	Aesculus parviflora
14	Cherokee Brave Dogwood	Cornus florida "Comco No.1"

The mission of Alpharetta Arboretum, Inc. is to connect people to nature for their education and enjoyment. We engage the community through horticultural demonstration, ecological education and the stewardship of botanically rich places.

*With so much to do,
why not stay the weekend?*

Add **value** to your stay with **special rates** and **packages** at one of our modern and affordable hotels. Many offer a selection of suites, **local shuttle service**, **complimentary breakfast** and **free Wi-Fi**.

Aloft Alpharetta | (Arriving March 2018)

Atlanta Marriott Alpharetta | 770-754-9600

Comfort Inn | 770-664-7997

Courtyard Atlanta Alpharetta | 678-366-3360

DoubleTree by Hilton Hotel Atlanta-Alpharetta | 678-347-0022

Embassy Suites by Hilton Atlanta Alpharetta | 678-566-8800

Extended Stay America-Atlanta-Alpharetta-Rock Mill Road | 770-475-2676

Extended Stay America-Atlanta-Alpharetta-Northpoint-East | 770-475-7871

Extended Stay America-Atlanta-Alpharetta-Northpoint-West | 770-569-1730

Fairfield Inn & Suites Atlanta Alpharetta | 770-663-4000

Hampton Inn Alpharetta/Roswell | 770-640-5511

Hampton Inn & Suites Alpharetta | 678-393-0990

Hilton Garden Inn Atlanta North/Alpharetta | 770-360-7766

Hilton Garden Inn Atlanta Northpoint | 678-566-3900

Holiday Inn Express & Suites Alpharetta-Windward Parkway | 678-339-0505

Homewood Suites by Hilton Atlanta-Alpharetta | 770-998-1622

Hyatt Place Atlanta/Alpharetta/North Point Mall | 770-594-8788

Hyatt Place Atlanta/Alpharetta/Windward Parkway | 770-343-9566

La Quinta Inn & Suites Atlanta Alpharetta | 770-754-7800

Residence Inn Atlanta Alpharetta/North Point Mall | 770-587-1151

Residence Inn Atlanta Alpharetta/Windward | 770-664-0664

Staybridge Suites Alpharetta-North Point | 770-569-7200

The Hotel at Avalon & Alpharetta Conference Center

(Arriving January 2018) | 470-588-1075

TownePlace Suites Atlanta Alpharetta | 770-664-1300

Wingate by Wyndham Alpharetta | 770-649-0955



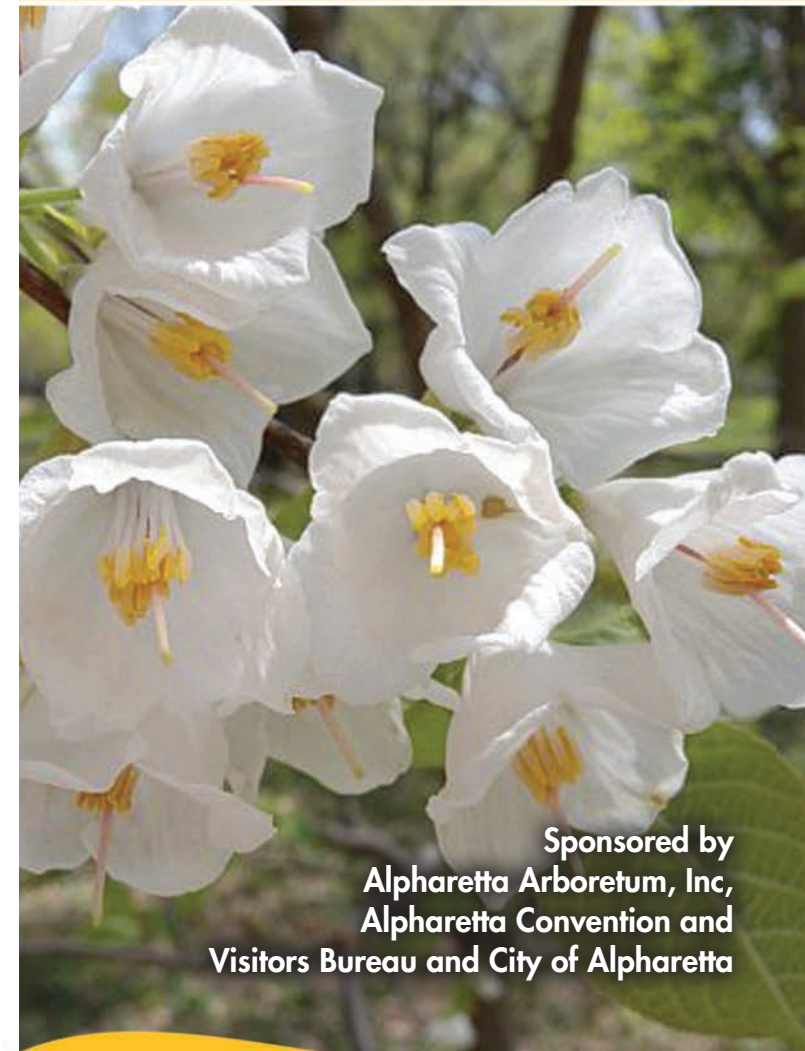
Book your Alpharetta hotel stay directly at awesomealpharetta.com! Scan here with your smart phone or tablet.



#AwesomeAlpharetta

ALPHARETTA Arboretum

AT BROOKE STREET PARK



Sponsored by
Alpharetta Arboretum, Inc.
Alpharetta Convention and
Visitors Bureau and City of Alpharetta



Alpharetta Convention and Visitors Bureau
www.awesomeAlpharetta.com • 678-297-0102 • 800-294-0923
The Official Destination Marketing Organization for Alpharetta, Georgia

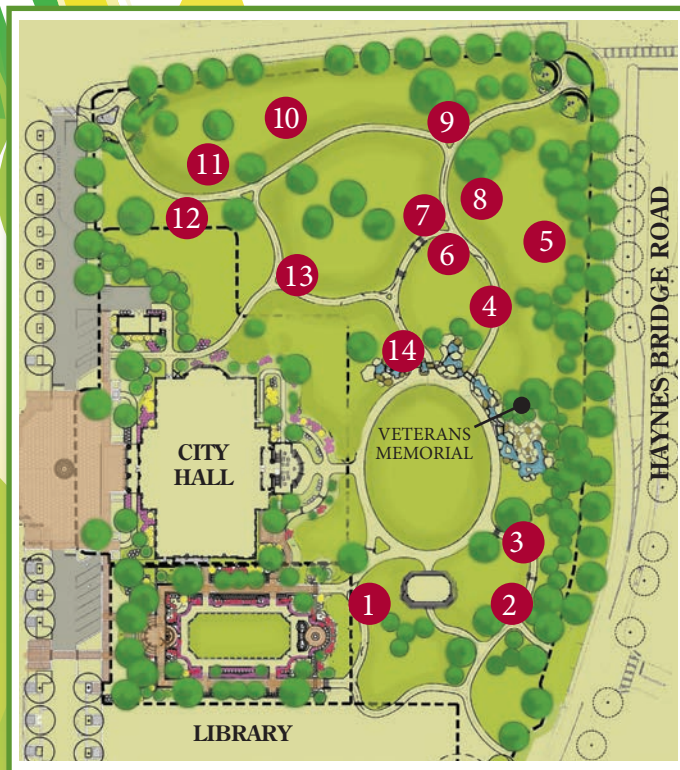


Alpharetta Convention and Visitors Bureau
www.awesomeAlpharetta.com • 678-297-0102 • 800-294-0923
The Official Destination Marketing Organization for Alpharetta, Georgia

Alpharetta Arboretum at Brooke Street Park

Welcome to the **Alpharetta Arboretum at Brooke Street Park**. Established in 2016, this arboretum features a variety of springtime flowering trees that will delight visitors with vibrant colors. Flowering trees are a staple in landscapes and are used as ornamental and specimen plantings. Flowering trees add color to the landscape with their wide range of sizes and flower color choices. **Brooke Street Park** is a five-acre passive park in downtown Alpharetta located just behind City Hall. Take your time to enjoy the park and arboretum at your own pace with a winding concrete path, a beautifully landscaped stream, open lawn, Veterans War Memorial and a small reading garden located between City Hall and the new Fulton County Library.

Be sure to visit Alpharetta's other arboretums at **Cogburn Road Park**, **Webb Bridge Park** and **Wills Park**.



1 | Snow Fountains Weeping Higan Cherry



This ornate tree can grow up to 15 feet tall with a six to eight foot spread. The Snow Fountain is known for its 1 1/2 inch white flowers that beautifully cascade to the ground on drooping branches.

2 | Chinese Snowball Viburnum



The Chinese Snowball Viburnum tree prefers well-drained soil and may reach up to 20 feet in height. In the south, this tree behaves like a semi-evergreen with white snowball-like flowers.

3 | Serviceberry



Serviceberry trees are native to the eastern United States and can grow 20 to 50 feet in height. Six species of this tree are native to the U.S. The fruit of the serviceberry is 1/4 to 1/2 inch round, varies in color and is a delicacy to many animals.

4 | Carolina Silverbell



The Carolina Silverbell is a native southeastern tree known for its beautiful bell-shaped white blossoms. This tree reaches full bloom in May.

5 | Sugar Maple



A large native tree to the Eastern United States, the Sugar Maple can grow to over 60 feet tall. The Sugar Maple is renowned for its flame orange-red fall color, useful lumber and maple syrup production.

6 | Red Buckeye



The Red Buckeye is a thicket-forming shrub or small tree that can grow up to 25 feet. It has palmately-compound leaves with five to seven leaflets and bright red flowers. The seed of the Red Buckeye is poisonous.

7 | Grancy Graybeard



This is a native tree to the United States, located anywhere from New Jersey to South Florida. This tree can grow to 35 feet tall with flowers that drop from 1/2 to 1 inch long.

8 | American Holly



The American Holly is a native evergreen to the United States and can be found from Virginia to Florida. American Holly is known for its dark-green leaves with needle-like spines. This is an important wildlife tree – its bright red berries are eaten by songbirds and other animals like wild turkey.

9 | Higan Cherry



Higan Cherry is a popular tree that bears white-to-pink flowers with a shiny reddish-brown bark that can grow to a mature height of 20 to 40 feet. It is known to bloom in autumn and during a mild winter. Birds are often attracted to its late season fruit.

10 | Willow Oak



This tree is a native to the Southern United States. It has thin, narrow, bristle-tipped leaves and can reach heights of 100 feet tall. Willow Oaks are widely used as park and street plantings in the South.

11 | Snow Goose Cherry



The Snow Goose Cherry grows to a height of 20 feet with the same spread. This tree has white flowers that are bowl-shaped and 3/4 inch across. It is also known for its coppery-red, glossy, peeling bark.

12 | Kwanzan Cherry



The Kwanzan Cherry grows up to 35 feet tall with a 25 foot spread and is well-known for its showy double pink flowers. This tree has a longer period of bloom than most other flowering Cherry trees.

13 | Bottlebrush Buckeye



This tree is native to Alabama and southwest Georgia. It has palmately compound leaves with five to seven leaflets with many flowered cylindrical stalks of white blossoms that can be up to 20 inches long.

14 | Cherokee Brave Dogwood



The Cherokee Brave Dogwood grows to 25 feet tall and is known for its bright pink bracts with white flower clusters. Its leaves emerge burgundy-red and mature to a rich dark green.

“Brooke Street Park is a five-acre passive park in downtown Alpharetta located just behind City Hall.”